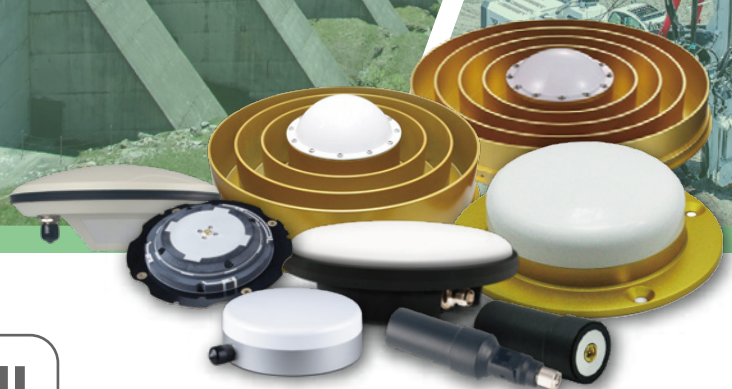


# SA-SERIES

GNSS ANTENNAS

## CONTRIBUTE TO HIGH PRECISION

Superior Partners of Your GNSS Receivers



High Gain



Full Constellation



High stability



Low Power



Rugged Housing



High Precision



Versatile Options



Wide Applications

**SingularXYZ**

# SA-SERIES GNSS ANTENNAS



SA100



SA120



SA150



SA180



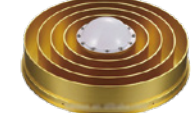
SA200



SA300



SA500



SA550



SA410

Antenna Type		Geodetic GNSS Antenna	Magnetic GNSS Antenna	Ruggedized GNSS Antenna	Helix GNSS Antenna	Helix GNSS Antenna	Aviation GNSS Antenna	Choke Ring Antenna	3D Choke Ring Antenna	4-in-1 GNSS Antenna
Signal Tracking	GPS	L1, L2, L5	L1, L2	L1, L2, L5	L1, L2, L5	L1, L2	L1, L2	L1, L2, L5	L1, L2, L5	L1, L2, L5
	GLONASS	L1, L2	L1, L2	L1, L2, L3	L1, L2, L3	L1, L2	L1, L2	L1, L2	L1, L2	L1, L2
	BeiDou	B1, B2, B3	B1, B2, B3	B1, B2, B3	B1, B2, B3	B1, B2, B3	B1, B2, B3	B1, B2, B3	B1, B2, B3	B1, B2, B3 B1C, B2a
	Galileo	E1, E5a/E5b, AltBoc	-	E1, E5a, E5b, E6	E1, E5a/E5b, E6	E1, E5a, E5b	-	E1, E5a, E5b, AltBoc	E1, E5a, E5b, AltBoc	E1, E5a, E5b, AltBoC
	QZSS	-	-	L1, L2C, L5	-	-	-	L1, L2C, L5	L1, L2C, L5	L1, L2, L5
	SBAS	+	-	+	-	-	-	+	+	+
	L-Band	+	-	+	+	-	-	+	+	+
LNA	Impedance	50 Ohm	50 Ohm	50 Ohm	50 Ohm	50 Ohm	50 Ohm	50 Ohm	50 Ohm	50 Ohm
	Polarization	RHCP	RHCP	RHCP	RHCP	RHCP	RHCP	RHCP	RHCP	RHCP
	Axial Ratio	≤3dB	≤3.0dB	≤3.0dB	≤3.0dB	≤3dB	≤3.0dB	≤3dB	≤3dB	≤3dB
	Azimuth Coverage	360°	360°	360°	360°	360°	360°	360°	360°	360°
	Gain at Zenith	5.5dBi	4.5dBi	5.5dBi	2dBi	3.5dBi	4dBi	7dBi	7dBi	-GNSS: 5.5dBi -BT/WIFI: 1dBi -4G: 0.5dBi
	Phase Center Accuracy	±2mm	±2mm	±2mm	/	±2mm	±2mm	±1mm	±1mm	±2mm
	LNA Gain	40dB	40±2dB	40±2dB	33±2dB	33±2dB	36±2dB	50dB±2dB	50dB±2dB	40dB±2dB
	Noise Figure	≤2dB	≤2dB	≤2dB	≤2dB	≤2dB	≤2dB	≤2dB	≤2dB	≤2dB
	VSWR Output	≤2.0	≤2.0	≤2.0	≤2.0	≤2.0	≤2.0	≤2.0	≤2.0	≤2.0
	Operation Voltage	3 - 18VDC	3 - 15 VDC	3.3 -18VDC	3.3 - 12VDC	3.3 -12VDC	3.3 - 12VDC	3.3 - 12VDC	3.3 - 12VDC	3.3 - 12VDC
	Operation Current	≤45mA	≤45mA	≤45mA	≤55mA	≤45mA	≤45mA	≤45mA	≤60mA	≤45mA
Ripple	±1dB	±2dB	±1dB	±2dB	±2dB	±2dB	±2dB	±2dB	±2dB	
Group Delay	<5ns	-	<5ns	/	-	-	<5ns	<5ns	<5ns	
Physical	Dimension	Φ152x62.2mm	Φ100×36.5mm	Φ150*53mm	Φ25×107mm	Φ27.5x59mm	Φ90×36mm	Φ322x261mm	Φ379x312mm	Φ135×26mm
	Connector	TNC Female	TNC	TNC Female	SMA Male	SMA Male	SMA Female	TNC Female	TNC Female	-GNSS: MCX male -BT: IPEX male -WIFI: IPEX male -4G: IPEX male
	Weight	374g	230g	≤600g	≤95g	25g	136g	5.2 kg	8.5 kg	≤ 200 g
	Mounting Configuration	5/8"x 11 Threaded	Magnet	5/8"x 11 Threaded or M4 screw	/	Bracket mounting	M4 screw	5/8"x 11 Threaded	5/8"x 11 Threaded	/
Environmental	Operating Temperature	-40°C to +85°C	-40°C to +70°C	-40°C to +85°C	-40°C to +80°C	-40°C to +85°C	-40°C to +85°C	-40°C to +85°C	-40°C to +85°C	-40°C to +85°C
	Environmentally Sealed Type	IP67	IP67	IP67, IP69K	/	IP67	IP67	IP67	IP67	-
	Humidity	95% No-condensing	95% No-condensing	95% No-condensing	95% No-condensing	95% No-condensing	95% No-condensing	95% No-condensing	95% No-condensing	95% No-condensing



Note: "-" do not support "+" support  
All specifications are subject to change without notice.

# Company Profile

SingularXYZ Intelligent Technology Ltd. is devoted to satellite navigation high-precision industry products and solutions, focusing on geospatial information, agriculture, machine control, robots and IoT industries, providing customers with reliable, stable and cost-effective professional products and solutions, which is committed to the improvement of human work results and efficiency.


Version 22-11-2021

---

 +86-21-60835489  
 +86-21-60835497  
 [singularxyz@singularxyz.com](mailto:singularxyz@singularxyz.com)  
 [www.singularxyz.com](http://www.singularxyz.com)

**SingularXYZ**

SingularXYZ Intelligent Technology Ltd.

 Floor 2, Building A, No. 599 Gaojing Road, 201702 Shanghai, China